

Cor
 Woo
 Cer
 Stone
 Bu
 DESIGN/BUILD: IN
 ARCHITECTS: KL
 ENGINEERS: RO

SPECIFICATIO
 LOBBY & RECEP
 Two custom colors
 wood tile
 BOARD ROOM
 Cork tile, natural pattern
 CORRIDORS
 Rubber tile, hammered finish in
 Eggshell
 LUNCH ROOM
 Rubber tile, hammered finish in
 Eggshell
 SALES OFFICE
 Antistatic carpet tile, stock color
 ADMIN OFFICE
 Antistatic carpet tile, stock color
 WC • Men's & Women's
 Rubber tile, hammered finish in
 Eggshell and custom blue
 LAN ROOM
 High pressure laminate, designer
 series
 COMPUTER ROOM
 Conductive VPT tile, in Glac



COMPUTER RM

SALES CENTER

ADMIN CENTER

RECEPTION

LOBBY/OBSERVATION AREA

TO ELEVATORS

L.A.N. RM

WC

WC

LUNCH RM

BOARD RM

ASM 3004

Custom Blue Hammered

Eggshell 49

Wood Tile

Wood Tile

ASM's
 Floor
 Finishes

Revised 10/02

ASM

Flooring Finishes: Functional Durable Beautiful

Building on a successful past, ASM's history is a long one; long on innovation and on quality. Stringent testing and quality control checks developed by ASM's technical team have served our clients well over the decades. Across the board, ASM's product lines are subject to rigorous examination - our floor finishes are no exception.

ASM has assembled a comprehensive array of floor finishes, some of which have been selected purely for their exceptional durability and beauty. Others have evolved past these qualities, in response to technological advances in the office environment.

For many years, ASM has been providing specialized and high quality flooring products to architects, designers, contractors, distributors and installers. ASM offers a flooring finish to satisfy every aesthetic requirement. Whether you are flooring the most rugged work space, or creating a controlled environment for sensitive instrumentation, ASM has your flooring answer.



contents

- 2 Contents**
- 3 High Pressure Laminate Tiles**
- 4 Platt's Laminate Technology**
- 6 VPT Conductive Tiles: Contile™**
- 7 VPT Static Dissipative Tiles: StatTile™**
- 8 Rubber Tiles: Antistatic & Regular**
- 10 Specialty Tiles**

High Pressure Laminate & Solid Finishes

High pressure plastic laminate is used in 90% of all computer room applications. It is the most common product used on factory laminated floor finishes.

Laminate is a one piece tile (24" x 24"), and unlike vinyl, HPL will provide a uniform finish with no joints. HPL has the advantage of not requiring wax or maintenance that could produce static problems in the data center.



ASM-2201-1



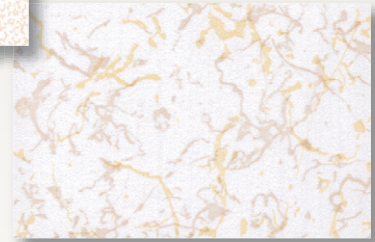
ASM-2203



ASM-2205



ASM-2204



ASM-2202



ASM - 2103



**Please contact us for samples or further assistance.
(843) 534-1110 Tel.
(843) 534-1111 Fax
or visit: www.asmproducts.com**

ASM

Designed Specifically for Raised Access Floors in Conjunction with Platts Laminate Technologies.

“Optimized Resin Formulas And Press Time For The Best Performance.”

- F. Holbrook Platts

ASM's

Laminate

with Platts Technology

F. Holbrook Platts

Mr. Platts is the worldwide expert in industrial and decorative High Pressure Laminate Technologies and boasts over 40 years industry experience with giants Westinghouse (Micarta Division), International Paper and Nevamar. Mr. Platts also served on ASTM and NEMA standards and technical committees for the laminates and building products industries for over 30 years.

ASM Laminate Performance Specifications

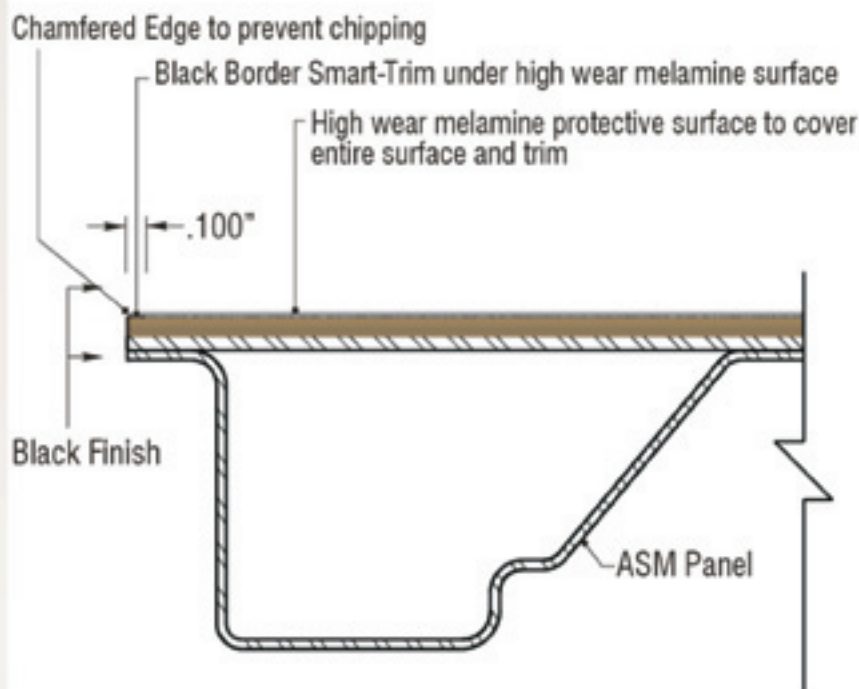
PROPERTIES	NEMA Test Method	NEMA Standard	ASM Laminate Results
Electrical Resistance	NFPA 99	-	$1.0 \times 10^6 - 2.0 \times 10^{10}$
Stain Resistance	3.4	No effect	No effect
Boiling Water Resistance	3.5	No effect	No effect
High Temperature Resistance	3.6	Slight effect	No effect
Wear Resistance	3.13	3000 cycles_(min.)	5000 +
Scuff Resistance	3.16	No effect	No effect

ASM

Smart-Trim (Patent Pending)

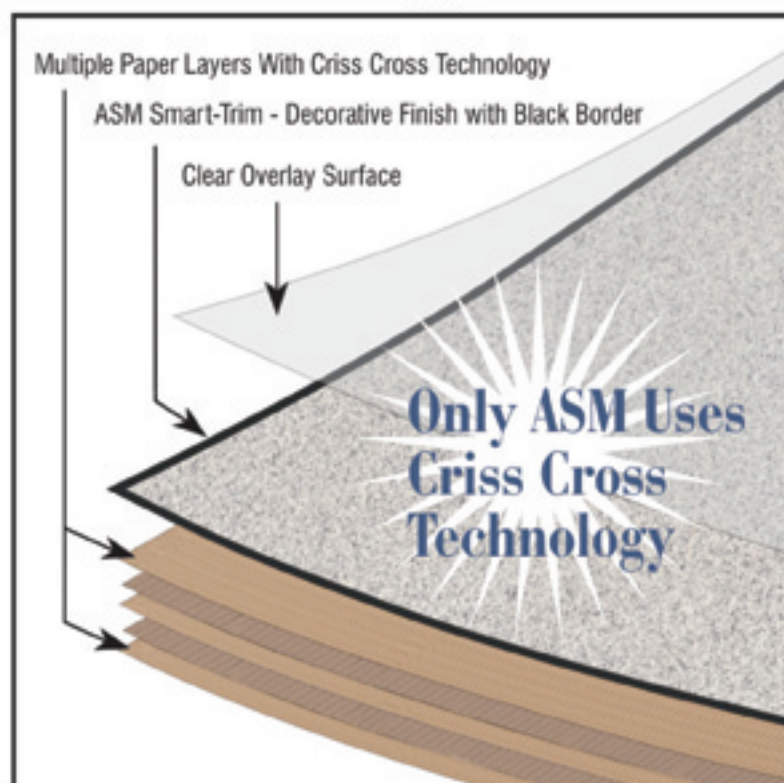
Smart-Trim Technology

**SMOOTH
SEAMLESS
WEARPROOF**



A Breakthrough in Laminate Technology

- **20% Better wear surface results than competition.**
- Revolutionary trim that is printed into the laminate under the high wear finish
- No routing or removal of high wear surface
- No exposed paper core to absorb dirt and moisture
- No recess or step down. Reduces chipping and caster noise. Eliminates dirt trap.
- No surface applied paint or inks - cannot wear off.



Vinyl Plastic Technologies

VPT uses a process to ensure the conductive elements are distributed evenly through the entire tile thickness. This, along with the finest materials, ensures a lifetime of consistent conductivity regardless of wear.

VPT carries a lifetime conductivity warranty.

VPT has a superior polished finish that does not require special treatments or waxes to maintain conductivity or appearance.

VPT has 14 colors to meet the needs of the most discerning designers.

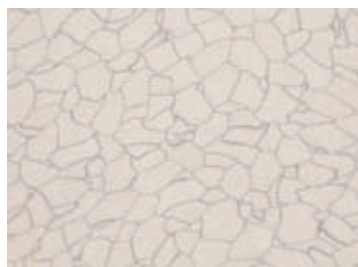
VPT is resistant to very strong chemicals

- acids
- strong alkalis
- alcohols
- aromatic solvents
- aliphatic solvents



ConTile & StatTile

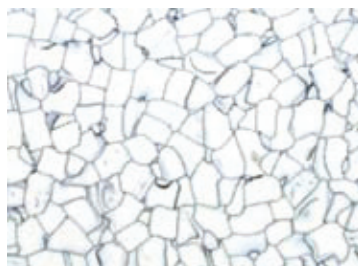
available in conductive and



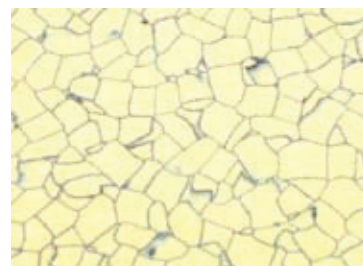
3160 Platinum



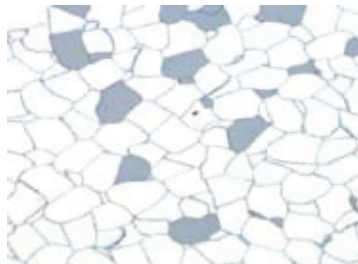
3161 Mint



3162 White



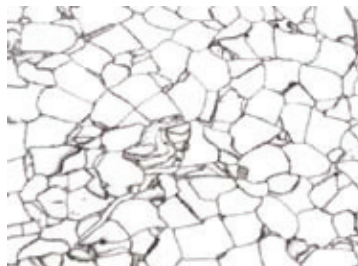
3163 Yellow



3164 Tundra



3165 Wintergreen



3166 Ice



3167 Diamond



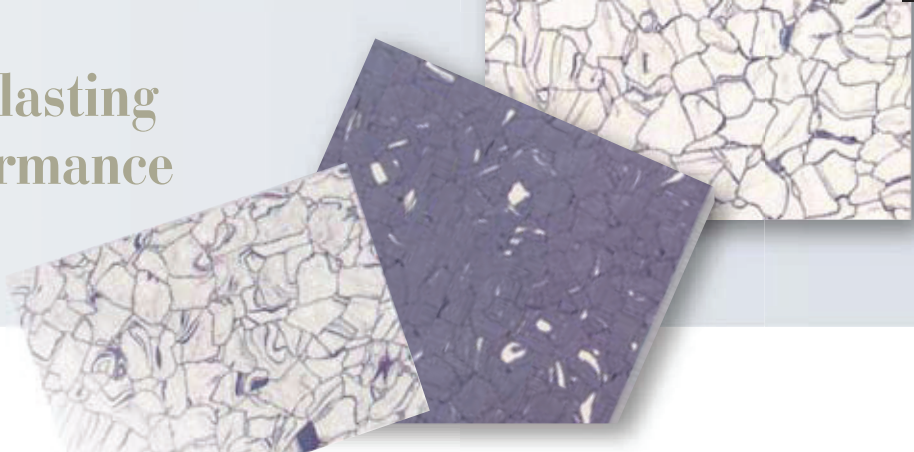
3168 Cloud



3169 Glacier

combines function with lasting beauty when high performance ESD flooring is a must

static dissipative



The use of VPT conductive or static dissipative floor covering checks the influence of electrostatic charges in the sensitive work places. The effects of electrostatic influence is very serious, and many of the incidents include damage to integrated circuits in semiconductor production and loss of valuable data from malfunction of computer equipment caused directly by a build up of static electricity.

There are also some cases of inadvertent ignition of inflammable and explosive substances caused by static discharge.

When two objects with electrostatic charge come into contact or friction, electron movement occurs with electrification to positive and negative poles which are stationary at the points of mutual contact, a direct action against these points will cause instantaneous electric discharge, the result being damage to products, pollution or malfunction. Because of this, both UL and NFPA strongly recommend the use of conductive floor coverings.

Where VPT is recommended:

- electronic manufacturing facilities
- computer/server room installations
- cleanrooms
- assembly factories
- telecommunications rooms
- health care laboratories



VPT

custom color
Send us your sample and we will match your custom color

Performance

Conductive

Static Dissipative

Resistance: point to ground	2.5×10^4 to $10^6 \Omega$	$10^6 \Omega$ to $10^8 \Omega$
Resistance: point to point	2.5×10^4 to $10^6 \Omega$	
Static decay	5000 to 0 volts in < 0.01 sec	5000 to 0 volts in < 0.2 sec

VPT sizes: 24 inch x 24 inch , 12 inch x 12 inch , 60 cm x 60 cm , 30 cm x 30 cm. Custom size if requested.



Antistatic Rubber Tile

Note: "-EL" CONDUCTIVE

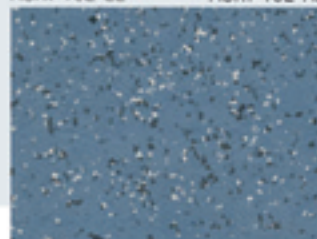
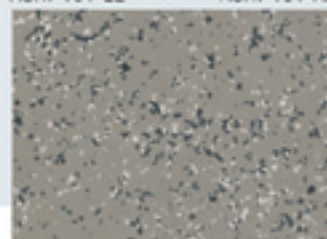
Note: "-AL" DISSIPATIVE

ASRT-101-EL

ASRT-101-AL

ASRT-102-EL

ASRT-102-AL

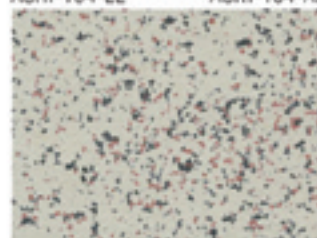
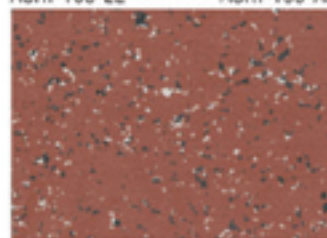


ASRT-103-EL

ASRT-103-AL

ASRT-104-EL

ASRT-104-AL

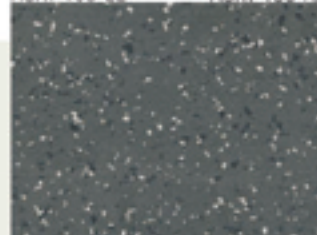
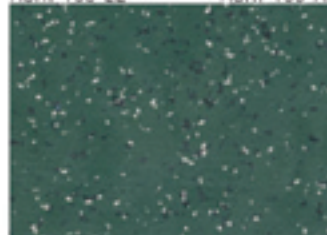


ASRT-105-EL

ASRT-105-AL

ASRT-106-EL

ASRT-106-AL



Health care facilities
Industrial buildings
Retail interiors
High traffic public venues
Leisure facilities
Airports and terminals
Nurseries
Schools and institutions
Office buildings

A practical approach to maintenance, ASM's Rubber tile system is easy to clean, and especially suitable for areas with high hygienic requirements. The materials are dimensionally stable, impact- and shock-resistant, durable and beautiful.

ASM's rubber flooring has all the special properties that satisfy the broad spectrum of requirements with respect to production and laboratory facilities, manufacturing space and workshop areas.

ASM's line of rubber flooring has been designed to meet the most stringent demands of high traffic areas, cleanrooms, and environments sensitive to electrostatic discharge hazards. To counter the potential damage of static buildup, electrostatic

dissipative (ESD) flooring has become an essential in many high-tech workspaces, particularly in environments using integrated circuit technologies.

Long a reality for the electronics industry as a whole, ESD flooring both inhibits charge generation and dissipates accumulated charges. These two properties need to be considered separately when selecting a flooring material. ASM's ESD rubber flooring initially minimizes accumulation of charges, making the discharge of static less of a concern.

Standard sizes: 20" x 20" , 24" x 24" , 50cm x 50cm, 60cm x 60cm, 61cm x 61cm. Custom sizes available upon request.

Rubber Properties

- Highly wear-resistant
- Extreme long life
- Dirt-repellent
- Cost-efficient maintenance
- No seal or finish to maintain
- Resistant to cigarette burns
- High degree of fire-resistance
- Excellent sound absorption properties
- Joint-sealing not necessary

Special Properties

- Electrostatic conductive "el"
- Electrostatic dissipative "al"
- Suitable for fork lift trucks
- Extremely fire-resistant
- Safe in fire-toxicological terms
- Resistant to oils and greases
- Extremely impact-resistant

custom color
Send us your sample and we will match your custom color



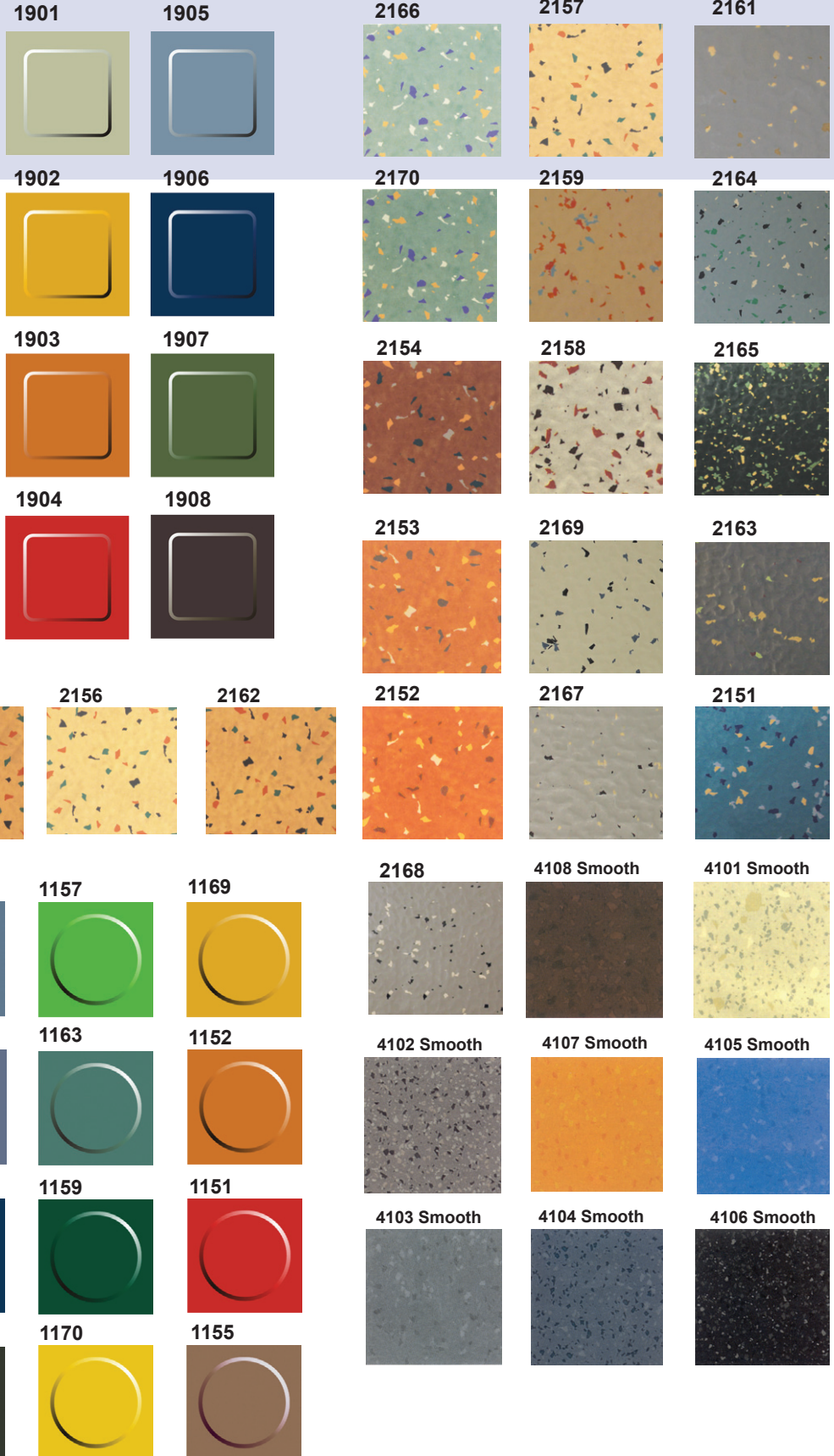
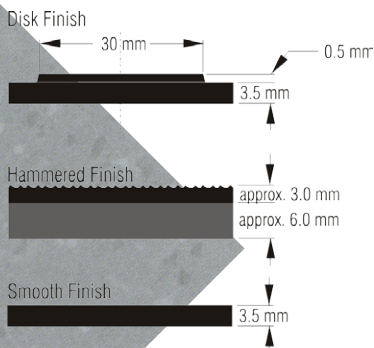
Standard Rubber Tile

Safe, beautiful and hard wearing
for a variety of applications

Hammered Finish

Electrostatic Protection

- Static generation less than 20 volts per AATCC-134
- Easy to maintain - no conductive wax necessary
- Chemical and hot solder resistant
- Resistant to most oils and grease
- Ultra low vibration
- Outgassing according to ASTM-E-595-84 VCM less than 1.2%



ASM Specialty Tiles

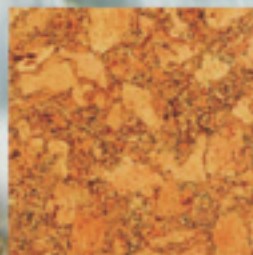
No matter what your architectural requirements, style or budget, ASM can provide the answer to your flooring challenges.


Use of this tile is environmentally clean and prevents off gassing, for a healthy work environment and helps contribute towards LEEDS.

ASM incorporates a wide range of naturals and composites in its repertory of tile materials. Whether you need the elegant glamour of stone, the warmth of wood, or the color impact of solid vinyl, ASM has a finish for you.

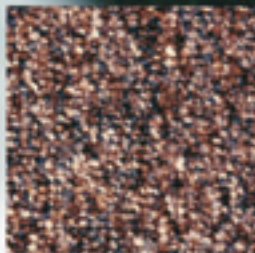
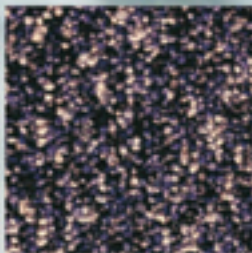
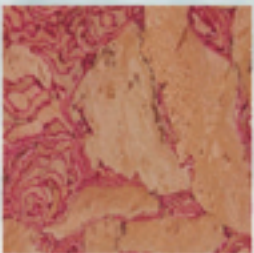
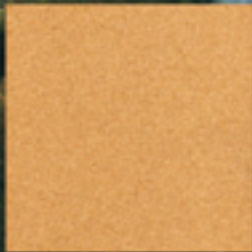
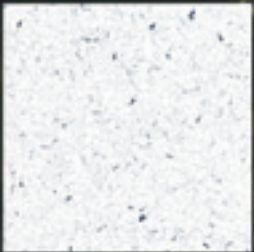
Today's construction typically requires technical properties exceeding the traditional boundaries of aesthetics and durability. The work environment of the present and future demand a sensitivity to instrumentation: building finishes that have been engineered to create a safe environment for electronics and equipment.

Unparalleled engineering and quality control. Innovative materials to accommodate today's refined design trends. Every color and every texture found in nature. And more, besides. If you need a specialty tile, ASM has your solution.





The Green Initiative uses environmentally friendly products applied to raised access floor tiles.



Linoleum
Corks
Bamboo
Woods
Ceramics
Stones
Composites
Solids
Glass
Vinyl
Rubber
Carpet

Corks
Woods
Ceramics
Stones
Rubber
Fibers
Vinyls
Plastics
Composites
Solids
Antistat
Dissipat
Linoleum



ASM's Floor Finishes

From boardroom
to classroom,
ASM is committed
to environmentally
sound methods.



ASM
innovations in access flooring

9500 Industrial Center Dr.
Ladson, South Carolina
29456
(843) 534-1110
(843) 534-1111 Fax

www.asmproducts.com

is a member of
Kingspan
Group plc

www.kingspan.com